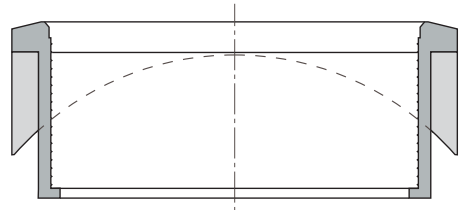
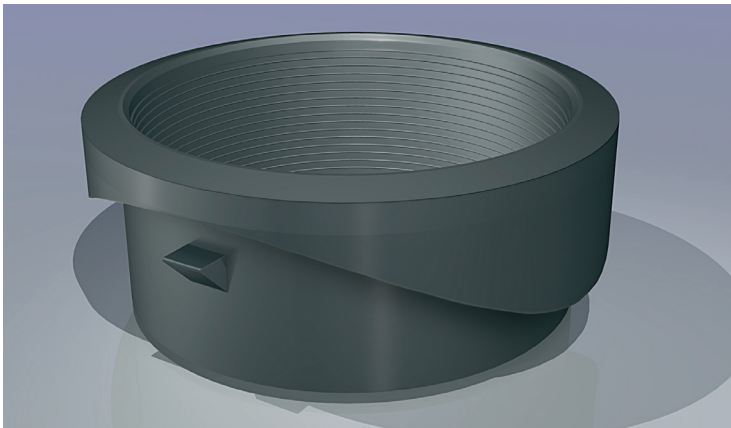


TUBOCOR LATERAL CONNECTOR

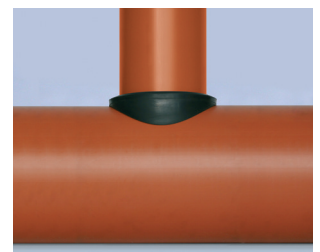
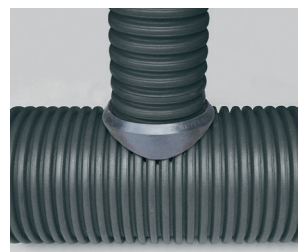
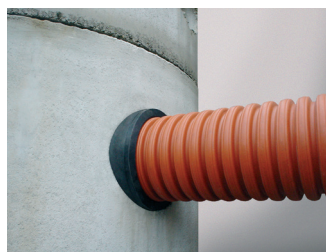


The Tubocor seal withstands a water pressure of 0,5 bar

Code	Main sewers	OD	Ø Drill hole
02A315-110	250/315/400	110	127
02A800-110	1000/800/630	110	127
02A300/500-160	300/400/500	160	177
02A800-160	1000/800/630	160	177
02A1200-160	1200	160	177
02A315-200	315	200	208
02A400-200	400/500	200	208
02A800-200	1000/800/630	200	208
02A1200-200	1200	200	208
02A500-250	400/500	250	263
02A800-250	1000/800/630	250	263
02A800-315	1000/800/630	315	320
02A1000/1200-400	1000/1200	400	412

Drainage connectors for sewage and rainwater pipe systems which are fast, simple and secure. Installed saddles create a watertight sealing mechanism in the construction of a lateral branch / pipe connection onto in-situ and existing pipelines. They also connect to concrete or plastic chambers. You can connect them to virtually any material.

TUBOCOR Saddles are incredibly secure and leak proof, with sales exceeding 50,000 per year our saddles offer the contractor and clients a guaranteed, worry free, and proven long term connection.



INSTRUCTIONS FOR THE ASSEMBLY

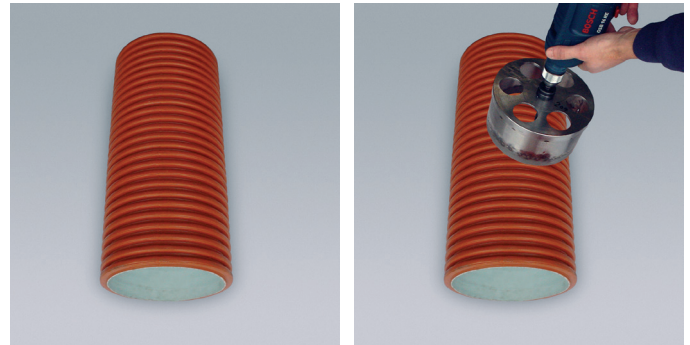
- 1- Use a core drill. Remember! The seal works best on clean cut accurate holes.

If possible use a drill with a fixed base.

If you use a hand held manual drill, it must be with **variable speed**.

Minimum power: 650 watts.

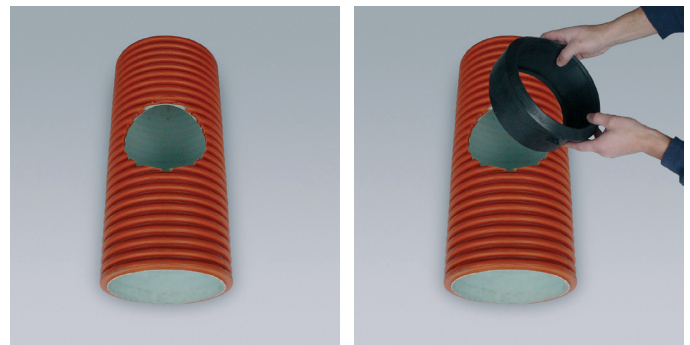
Use the minimal possible speed to drill the hole, pushing gently without aggressive movements, and as carefully as possible; particularly on plastic pipes taking more care with structured wall pipes.



- 2- Reverse hole-saw softly to avoid damage and use a sandpaper to eliminate rough edges and particles. Wipe area clean removing all debris from inside the pipeline and around the joint face.

It is essential the pipe is inserted to its maximum depth within the seal. Measure the seal depth when installed into the pipe, make a depth mark on the pipe at this distance, and push the pipe fully to the depth insertion mark.

We recommend lubricant to ease the saddle into place and for insertion of pipe.



- 3- Diameters of the hole saw

DN mm	HOLE SIZE mm
110	127
160	170
160	177
200	208
250	263
315	320
400	412

